

Branch Newsletter

Mission

AAUW advances equity for women and girls through advocacy, education and research.

Volume 28, Number 8

April, 2008

Inside this issue:

President's Message	2
Membership & News	3
Educ. Found.	4
Legal Advocacy	5
Interest Groups	6
Membership Form	7
Events Calendar	8

President

Edie Lee
745-5109
edie.lee@lifetime.oregonstate.edu

Membership Co-Vice Presidents

Pam Duren
929-3710
pam.duren@comcast.net
Dianne Jackson
739-0885
diquilter@comcast.net
Marion Dickens
753-1006
mardick4@msn.com

Treasurer

Sue Borden
752-6036
sueborden@cmug.com

Secretary

Janice Abele
753-5432
jlabele@aol.com

Newsletter Editor

Martha Jenkins
758-4390
marthaj@peak.org

Branch Program

Coordinator Edie Lee
edie.lee@lifetime.oregonstate.edu

Equity for Women: A Key Piece of the Sustainability Puzzle



Wednesday, April 16, 2008

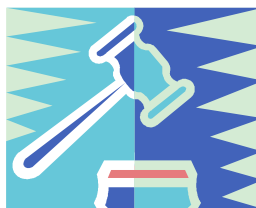
7:00 p.m.

**the activities room at
Corvallis Caring Place
750 NW 23rd St.**

**The activities room is quite warm, so please
dress lightly.**

What is sustainability – and how do current unsustainable conditions impact women, both globally and locally?

Annette Mills, a founder and co-facilitator of the Corvallis Sustainability Coalition, will address these questions and provide an overview of this new coalition's goals and accomplishments.



Annual Meeting of the Corvallis Branch—April 16th

A short Annual Meeting, where we will elect branch officers for 2008-9 and vote on a change to our branch by-laws will precede the program.

See more details on Page 4 of this newsletter.

President's Message

AAUW Helps Create Future Leaders

By President
Edie Lee

edie.lee@lifetime.oregonstate.edu



My hope is that this collaboration will be strengthened as time goes on, and that OSU and LBCC women students will take advantage of the many opportunities offered by AAUW at the national, state, and local levels.
-Edie Lee

An OSU student has recently been selected and plans to attend the 2008 National Conference for College Women Student Leaders in Washington, D.C. in June. She is Katie Parker, a sophomore in history & international studies in the Honors College. "She is a stellar student involved in the Feminist Majority Leadership Alliance in addition to the Women's Leadership Initiative...and is very involved in social justice issues", according to Beth Rietveld, Director of the Women's Center at OSU.

To my knowledge, this is the first year that an OSU

student is attending the Conference, although NCCWSL, sponsored by the AAUW [Leadership and Training Institute](#) and NASPA's [Center for Scholarship, Research, and Professional Development for Women](#), has been offered for over twenty years. This conference offers women students the opportunity to build leadership, advocacy, networking, financial management, and other skills during a fast-paced, two-and-a-half day experience focused on enhancing student leadership.

I'm glad that the Corvallis branch of AAUW has been able to collaborate with

OSU to distribute this information and get some response. My hope is that this collaboration will be strengthened as time goes on, and that OSU and LBCC women students will take advantage of the many opportunities offered by AAUW at the national, state, and local levels. Here's to our future women leaders!



Membership

Member News

Kelly Volkmann, an AAUW Member at Large, has joined The Partnership Coalition of Corvallis as the new Benton County Substance Abuse Prevention Coordinator. She recently completed her mas-

ter's degree in public health from Oregon State University, where she received an Oregon MPH Outstanding Student Leadership Award. She is bilingual and has a strong interest in Latino health

issues. Kelly will be the new General Manager for the Partnership and will provide supervision for the student intern as well as manage data and budget reporting.

By Membership Co-Vice President
Pam Duren
pam.duren@comcast.net

New Email Address

Valerie Krauss, krauss2528@comcast.net



News & Notes

Help Wanted—Oregon News Editor

AAUW of Oregon is seeking a volunteer to join the state leadership team as ON editor beginning July 1, 2008 for either one or two years.....length of

commitment would be her choice. For 2008-09 the new editor would be responsible for four issues of ON with the first one the fall August 2008 issue. For

more information, contact Marilyn Mullanix at marilyn1928@comcast.net or (541) 686-1928.

35th Anniversary of Women Studies and Women's Center

Please join us in celebrating the 35th anniversary of Women Studies, the Women's Center and the President's Commission on the Status of Women at Oregon State University, **Friday, April 25th at 12:30 p.m.** Luncheon honoring founders Jeanne Dost, Margaret Lumpkin, and Jo Anne Trow, **held at Reser Stadium, Loge Level.**

Guest speaker: Susan Scanlan, Executive Director, Women's Research and Education Institute, Washington, DC and President, National Council of Women's Organizations

Cost: \$25 per person

Please send your check to Lisa Lawson, Women Studies, by April 18th.

If you would like to make a donation to the Founders

Scholarship, you may include an additional tax-deductible amount in your check.

Susan M. Shaw, Ph.D.
Director, Women Studies,
Oregon State University

Educational Foundation

2008-9 AAUW International Fellowship Recipients at OSU

By Education Foundation
Chair Jan Rounds
donjan@peak.org

We are proud to have these EF International Fellows at OSU. They will be presenting at the State Convention this year. Their biographical information is taken from the Spring 2008 issue of *Oregon News* magazine.

Ruth Mwandira, recipient of an EF International Fellowship, was born in Zambia and is a citizen of Malawi. She has a BS in Agriculture with certification in Education from the University of Malawi and an MBA from Durham University, UK. Her

PhD studies in Public Health at Oregon State University will prepare her to help produce more efficient and effective health managers in Malawi. Ruth is living in Orchard Park housing with her daughter who is attending Corvallis High School. She attended our Christmas Tea in November..

Esther Uchenda earned her BS and MS in Botany and Microbiology from the University of Ibadan in Nigeria. She worked as a research supervisor

with the International Institute of Tropical Agriculture in Ibadan, Nigeria, for eight years to improve major food crops in developing countries. Esther is currently pursuing a doctorate at the Oregon State University Department of Horticulture and undertaking research projects to improve the longterm storage and management of plant species with economic value. Esther has attended two of our AAUW meetings this year and lives at Ashwood Apts. in Corvallis.



Legal Advocacy Fund

By LAF Liaison
Marilyn Roland
rolandm2@comcast.net

Please save your gently-used hardback and paperback books and other media items such as CDs, DVDs, VHS cassettes, books on tape, etc, for the

Legal Advocacy Fund Sale at the May 24 luncheon at Corvallis Country Club. The greater variety of materials the better! This is one way we can earn

funds to assist women seeking redress against institutions of higher learning over matters of equity or harassment. "Equity is still an issue."



2008 Corvallis Branch Annual Meeting

Agenda Items

(Continued from Page 1)

1. Election of Officers.

The Nominating Committee has proposed the following slate of officers:
President - Janice Abele
Vice President for Program - TBA (one year - finishing a two-year term)
Vice President for Membership - Nancy Neumann (assisted by Edie Lee and Marion Dickens) (2-year term)
Secretary - Holly Harris (2-year term)

membership at our Annual Meeting in April the following change in our local bylaws:

Amend Article X, BRANCH MEETINGS, Section 1 – Meetings, b. Regular Meetings, *The branch shall hold a meeting each month from September to May.*

Replace this sentence with the following: *The branch shall hold no less than six Branch meetings each fiscal year.*

no longer be required to have a meeting every month from September to May.

This change would allow us to plan more creatively for higher quality mission-based programs that would appeal to the general public as well as to branch members. It gives us more flexibility in planning and the opportunity to take advantage of speakers and events that will advance our mission.

2. Amendment to the Branch Bylaws. The

Board recommends to the

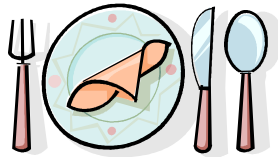
Impact: The branch would



Interest Groups

By Brenda Rowley

Gourmet Group



The third Gourmet Dinner of the season was held on March 15th and was hosted by Brenda Rowley and Bob Combs. Participants enjoyed a variety of dishes representing several African Nations. The entree was a stew, Groundnut Chop, which contained chicken, beef and vegetables and was

served with a variety of toppings. An interesting and delicious meal from the start, Chili Blood Marys to the finish of Moroccan Orange and Lemon Cake.

The next Gourmet Dinner will be on the 17th of May and will feature Chinese dishes. Seating is limited,

so it is a good idea to make your reservations early by phoning Brenda at 752-6779.

Thanks from your Gourmet Committee: Christine Cantey, Denise Nervik and Brenda Rowley

No Host Lunch



On Thursday, April 17, 2008, at 11:45 a.m., so we will meet for lunch at **Cloud Nine**, 126 SW 1st Street (on the Riverfront in the **Old Lovino's** loca-

tion). No need to make a reservation.

Just jot it on your calendar, then drop in for good food and nice company. Hope to see you

there!

Contact Person: Carolyn Simmons, CrCARO-LYN@aol.com, 758-0271.

By Carolyn Simmons

Afternoon Literature Group



We'll meet on Tuesday, April 8, 2008, at 2:00 p.m., at the home of Muriel Lawrence, 930 NW Oak-

dell Place.

Hope Reenstjerna will lead the discussion of A Thousand Splendid Suns

by Khaled Hosseini.

Contact Person: Carolyn Simmons, CrCARO-LYN@aol.com, 758-0271.

By Carolyn Simmons

Evening Literature Group



For April, the evening lit group will be reviewing the book Gentlemen and Players written by Joanne Harris. Mary Gray will be giving the author's report. We will be meeting April

2nd, 7:30 p.m., at Julie Searcy's home and Louise Wiprud will be co-hostess. Please contact Julie at 753-9471 or e-mail her at jsearcy@peak.org to let her know you will be com-

ing. Julie lives at 2854 NW Angelica Dr. Thanks!

By Connie Anderson



2008 - 2009

Corvallis Branch AAUW Membership Form



Note: The information you provide will be printed in the Branch Membership Directory unless you indicate otherwise.

Please complete this form and send with your payment to:

Pam Duren
3329 Woodbine Pl.
Philomath, OR 97370

Member Name _____

Address _____

City _____ State _____ Zip +4 _____

Telephone: Home: _____ Work: _____

E-Mail: _____

University/College _____ Highest Degree _____ Field of Study _____

2008-2009 Dues Payment

\$77.00

Table with 2 columns: Category (Branch, State, National, Total) and Amount (\$17.00, \$11.00, \$49.00, \$77.00). Includes note: (AAUW of Oregon dues include a one-year subscription to the Oregon News at \$1.00)

If you are a Life Member, Student Affiliate Member or Member-at-Large, please contact Pam Duren (pam.duren@comcast.net) for dues information.

- I need a print copy of the newsletter, and enclose \$10.00 for printing and postage. \$ _____
Contribution to the Local Scholarship Fund - Provides tuition scholarships to older than average female students. (Contribution is not tax deductible) \$ _____

Total \$ _____

Make check payable to: Corvallis Branch AAUW

AAUW dues are not deductible as charitable contributions for federal income tax purposes, but may be deductible as an ordinary and necessary business expense. Checks written separately to AAUW Educational Foundation or AAUW Legal Advocacy Fund are tax deductible contributions.

Contributions

AAUW Legal Advocacy Fund (LAF) (Check written to LAF is tax deductible) \$ _____

LAF is the nation's largest legal fund focused solely on sex discrimination in higher education. Since 1981, LAF has helped students, faculty and administrators challenge discriminatory practices involving sexual harassment, denial of tenure and promotion, and inequality in women's athletic programs.

AAUW Educational Foundation (EF) (Check written to EF is tax deductible) \$ _____

EF provides funds to advance education, research, and self-development for women and to foster equity and positive societal change.

EVENTS CALENDAR

APR	ACTIVITY	TIME	LOCATION
2	Evening Literature Group	7:30pm	Home of Julie Searcy 2854 NW Angelica Dr.
8	Afternoon Literature Group	2:00pm	Home of Muriel Lawrence 930 NW Oakdell Place
14	Board Meeting	1:00pm	US Bank
15	Newsletter Articles due to Patti Cleveland		Email to pattic@peak.org
16	Branch Program Corvallis Sustainability Coalition, Annette Mills	7:00pm	The Corvallis Caring Center
17	No-Host Lunch	11:45am	Cloud Nine, 126 SW 1st St, Corvallis
25-27	AAUW of Oregon Convention		Portland, OR
MAY	ACTIVITY	TIME	LOCATION
17	Gourmet Group Meal—Featuring food from China Make your reservations early!		Reservations—call Brenda 752-6779